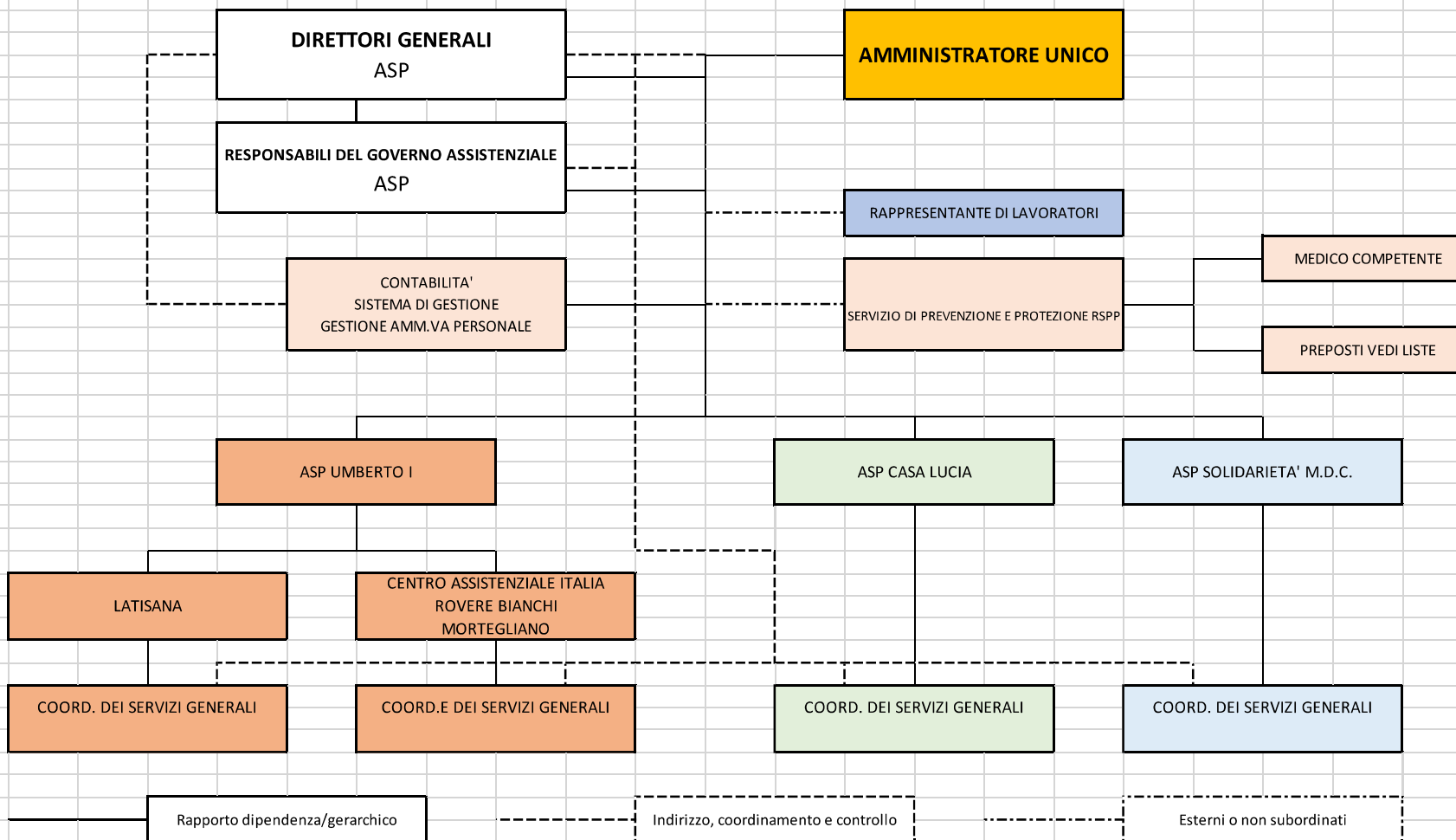
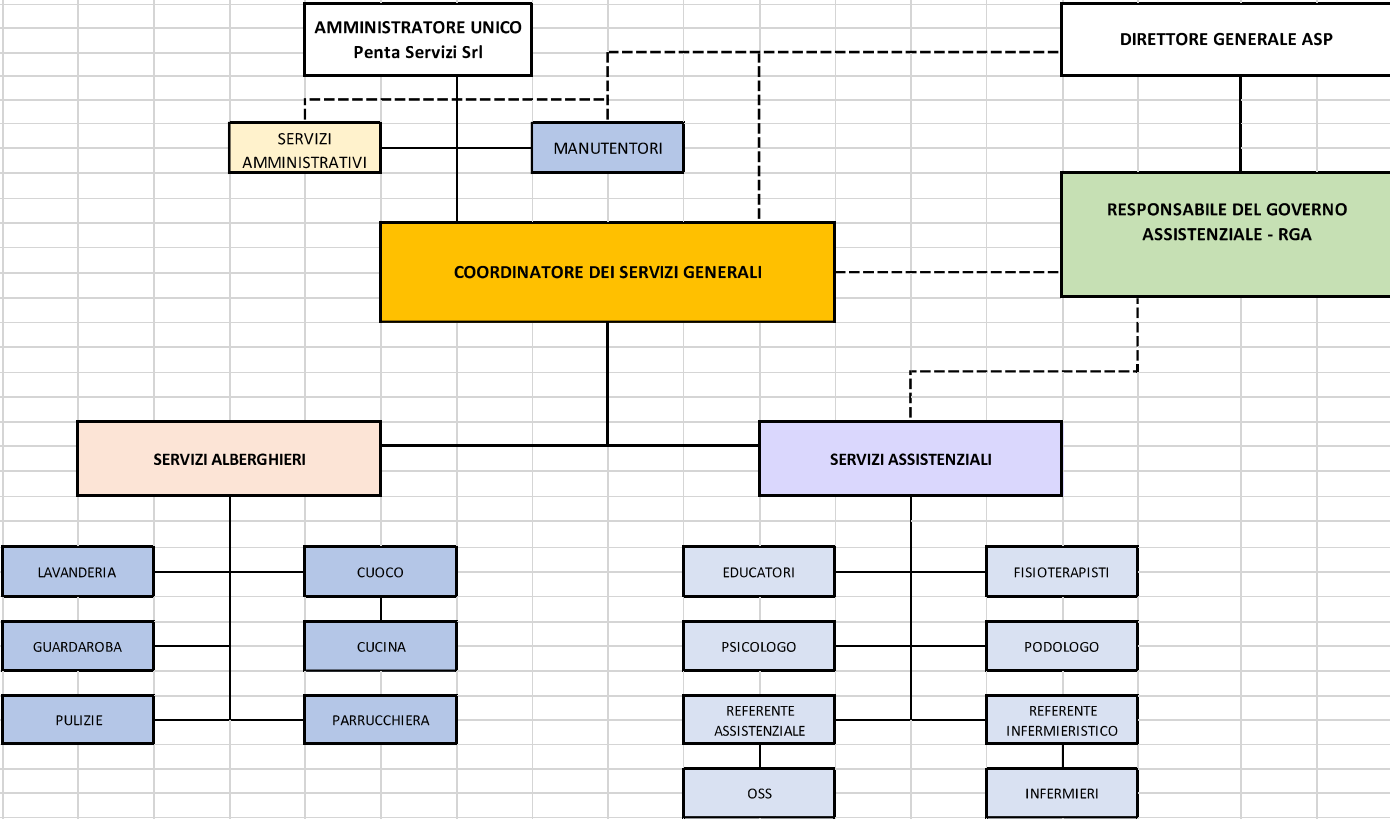


PENTA SERVIZI SRL ORGANIGRAMMA NOMINALE GENERALE



ORGANIGRAMMA PENTA SERVIZI SRL - ASP CASA LUCIA (Pasiano di Pordenone)



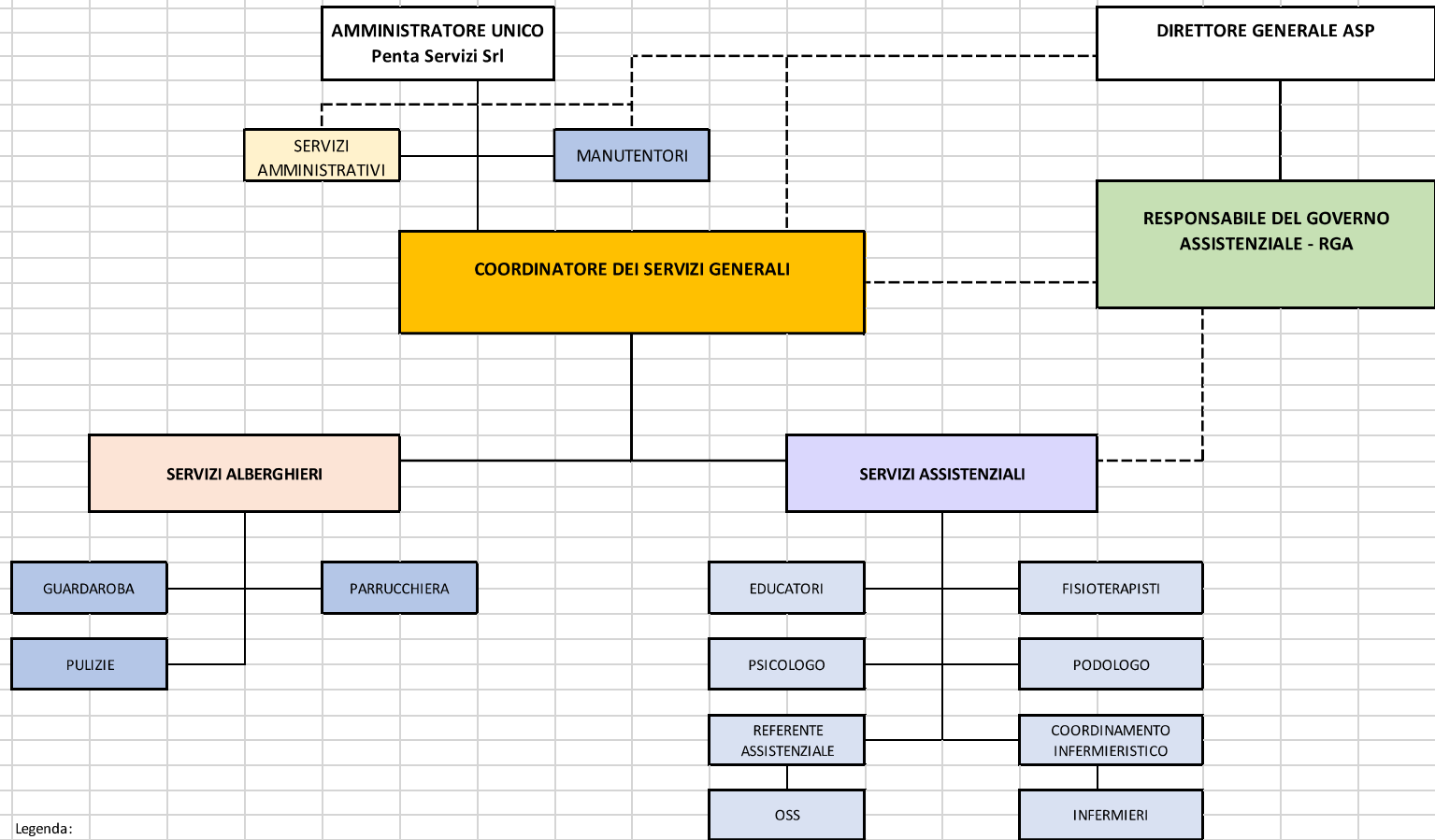
Legenda:

— Rapporto dipendenza/gerarchico

- - - Indirizzo e controllo

ORGANIGRAMMA

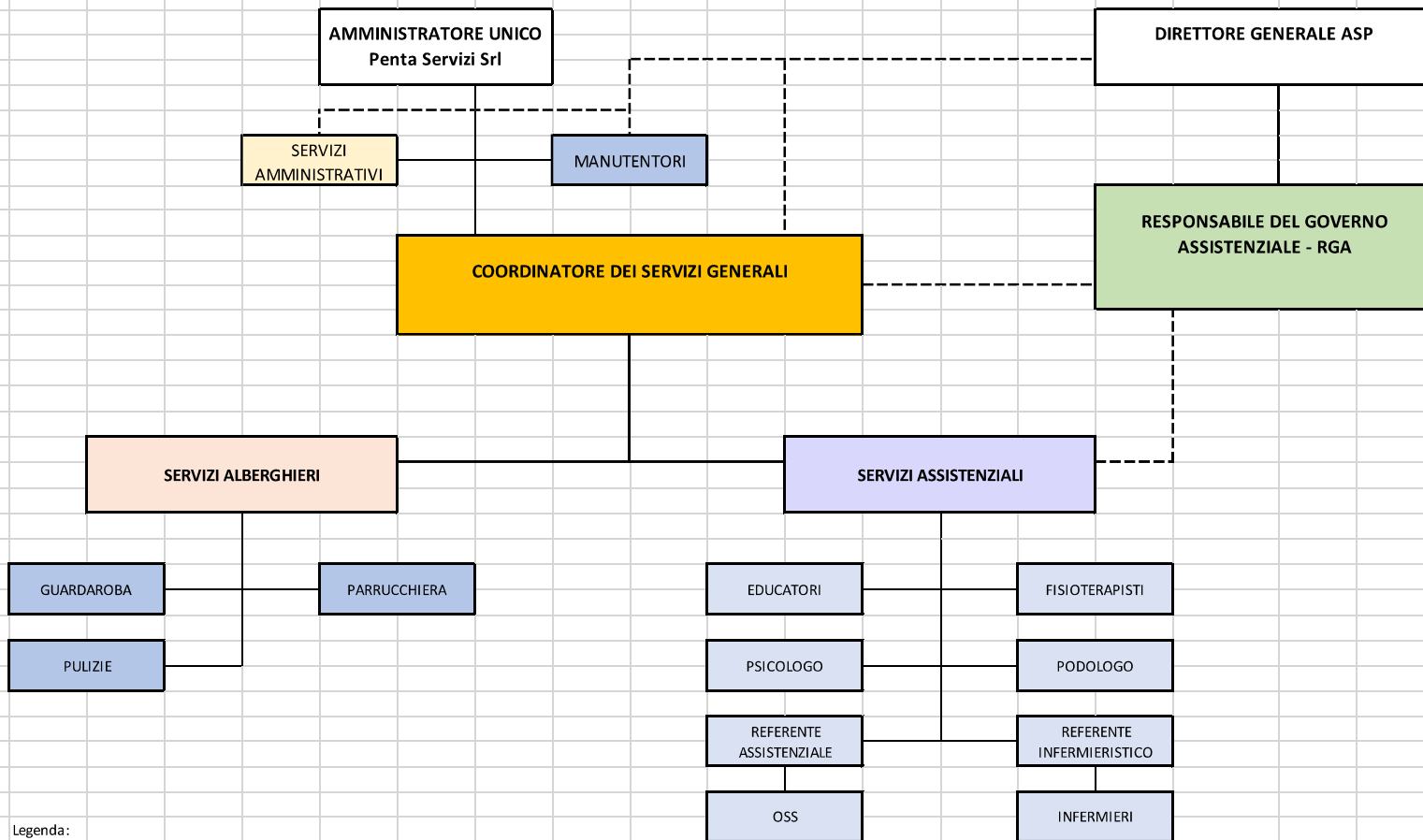
PENTA SERVIZI SRL - ASP UMBERTO I (Centro Assistenziale Italia Rovere Bianchi - Mortegliano)



Legenda:



ORGANIGRAMMA PENTA SERVIZI - ASP UMBERTO PRIMO (Latisana)

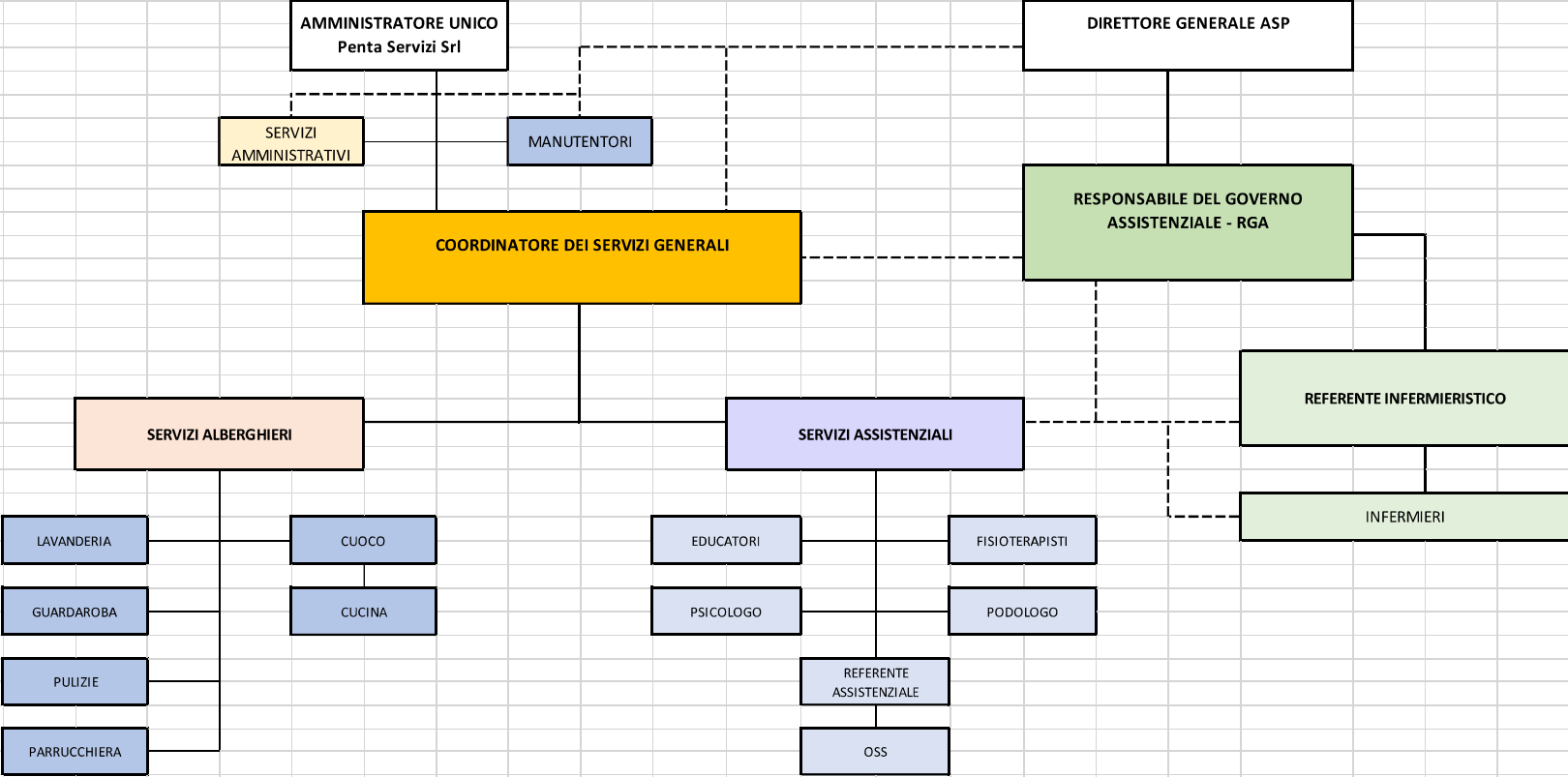


Legenda:



ORGANIGRAMMA

PENTA SERVIZI SRL - ASP SOLIDARIETA' M.D. CADORE (Azzano Decimo)



Legenda:

